

## Hockley Croft, Boroughbridge, York Price £543,995

The beautiful Warkworth is a spacious four-bedroom, detached family home with an integral double garage, ideal for families that are looking for clever design and luxury features. Ready to move into in Spring 2023.





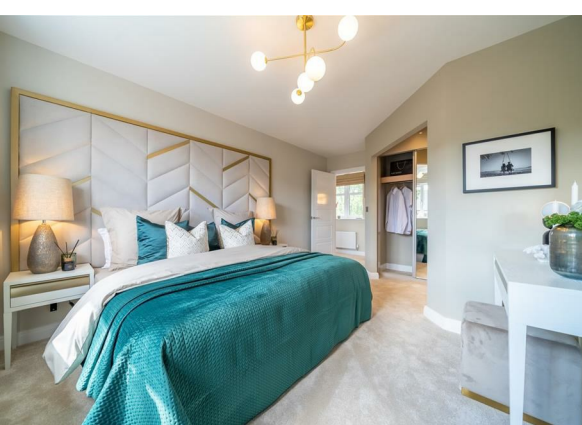
On entering this substantial property, you will find classic double doors that lead into a luxurious lounge with a stunning feature bay window. The hub of the home is the high specification kitchen with a dining area, a true focal point that benefits from stylish French doors opening out onto the pretty garden, perfect for entertaining on warm summer evenings. Catering for busy family life, there is a utility room with access to the garden and a spacious double garage. Double doors from the dining area take you into a homely family room which is an ideal place for children to play or can be used as a snug for the whole family to enjoy.

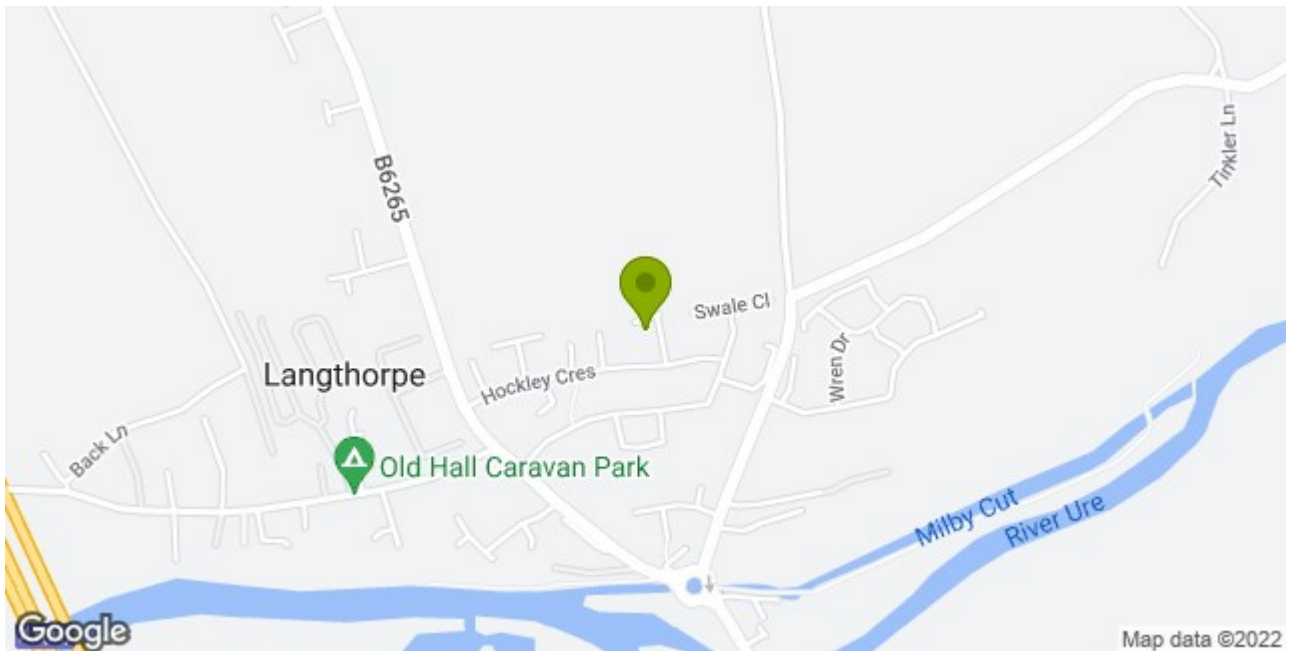


The first floor offers an abundance of space and versatility with four stunning double bedrooms. The magnificent master bedroom has a stylish en-suite and a separate dressing area, a touch of glamour for the modern busy lifestyle. The second bedroom also features an en-suite shower room, offering guests a luxurious stay. The modern family bathroom is situated near bedrooms three and four and has a bath and a separate shower.



All illustrations, measurements, photography and layouts are for general guidance only.





## Stephensons

York  
Knaresborough  
Selby  
Boroughbridge  
Easingwold  
York Auction Centre  
Haxby

01904 625533  
01423 867700  
01757 706707  
01423 324324  
01347 821145  
01904 489731  
01904 809900

## Partners

J F Stephenson MA (cantab) FRICS FAAV  
I E Reynolds BSc (Est Man) FRICS  
R E F Stephenson BSc (Est Man) MRICS FAAV  
N J C Kay BA (Hons) pg dip MRICS  
O J Newby MNAEA  
J E Reynolds BA (Hons) MRICS  
R L Cordingley BSc FRICS FAAV  
J C Drewniak BA (Hons)

## Associates

CS Hill FNAEA  
N Lawrence

